

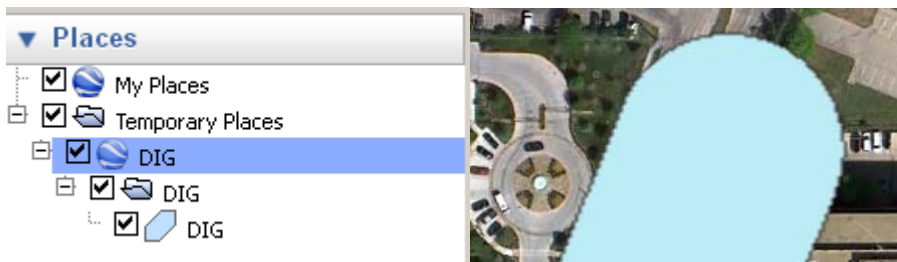
Instructions to view & create .KMZ/.KML files from Google Earth

Make sure you have Google Earth downloaded on your computer. If you don't, please visit this link to download Google Earth <http://www.google.com/earth/download/ge>.

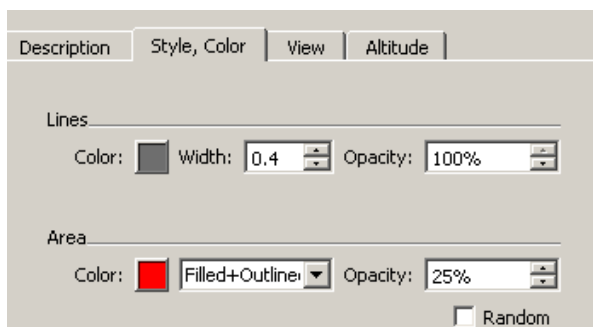
If additional help is needed, Google Earth provides additional resources located in the Help section and there are several tutorials available on YouTube.

Viewing Google Earth files

1. To view the file, double-click the .kmz or .kml file.
2. The information will appear under the Places panel and the map will zoom to the coverage area(s).

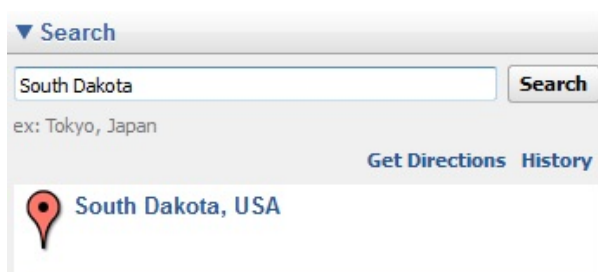


3. To change the color and opacity, right-click on the file; select Properties. A new box will open; select the Style, Color tab.

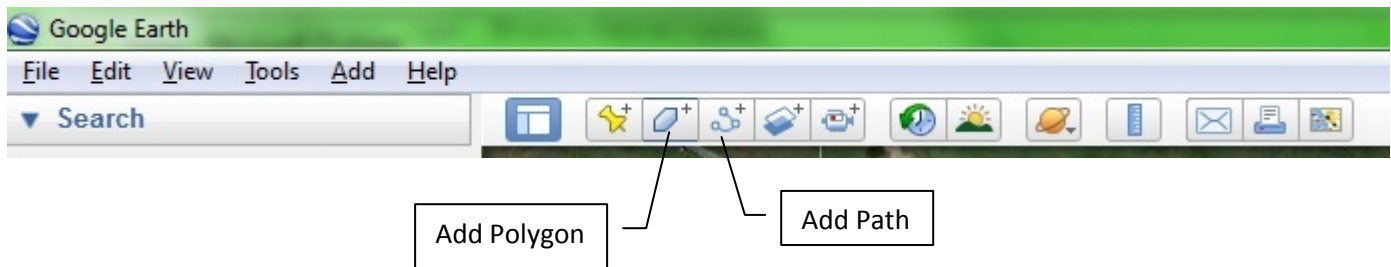



Creating a .KMZ/.KML file

1. Open the Google Earth program that you have installed on your computer.
2. To search for places, enter the search term(s) in the Search box under the Search panel and click "Search". You can search by address, business name, Lat/Long coordinates, keyword(s) and locale name.



3. Once Google has zoomed into the area that you're looking for, you can start drawing in the area that you need to have registered. You will use the toolbar provided by Google Earth. The Add Polygon and Add Path buttons will be the tools that you will want to use.




4. **Placemarks:** You can use placemarks to mark any location on the planet. You can then quickly go to the marked location at any time by double clicking the placemark in the Places panel. You can edit, move, share or delete any placemark. Start by clicking the placemark button  in the toolbar and then just click the area that you want to mark.
5. **Navigation Controls:**
- Use the Look joystick (top of the controls) to look around from one vantage point.
 - Click and drag the ring around the Look joystick to rotate the view.
 - Use the Move joystick (center of the controls) to move down, up, right or left.
 - Drag the pegman to the 3D viewer to switch to Street View.
 - Use the zoom slider to zoom in or out (+ to zoom in, - to zoom out).

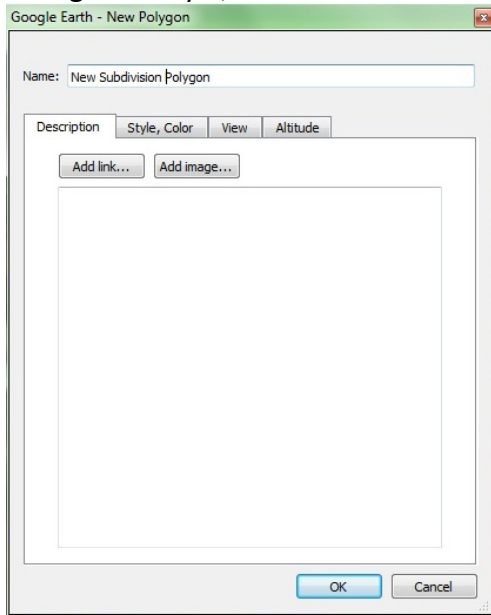


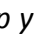
6. **Viewing Layers:** Layers can display a variety of interesting geographic content. To view a layer, check the layer or layer folder in the Layers panel. Note that some layer content does not appear until you zoom into an area. To hide a layer or layer folder, uncheck it. To expand or collapse a layer folder, click + or -.

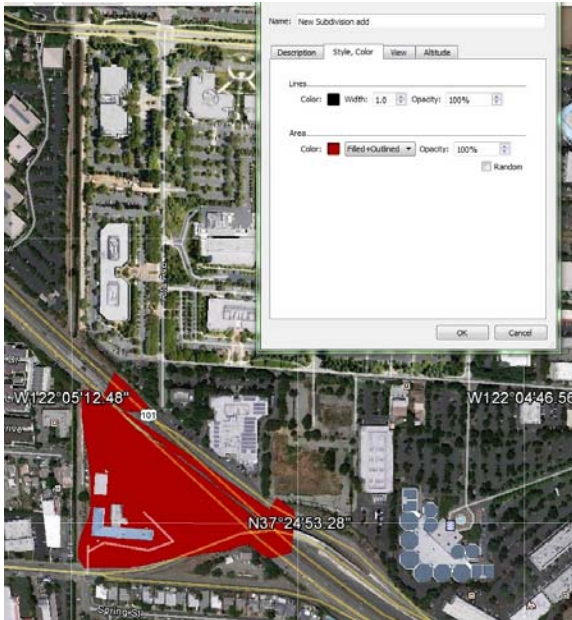


To Add Polygon

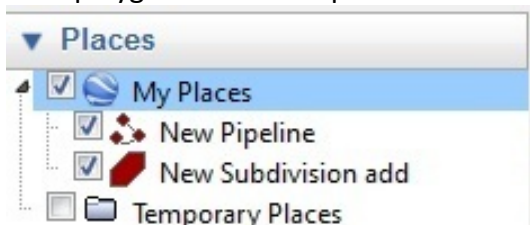
1. Click the Add Polygon button . A dialog box will open asking you to name your polygon. You can also change the Style, Color. ***DO NOT CLICK "OK" yet**



2. Once you've named your polygon, you can now go into the map and start drawing in the area that you want. *Notice when you go into the map your drawing tool will look like a square symbol .* After you finish drawing the polygon, then click OK in the dialog box.



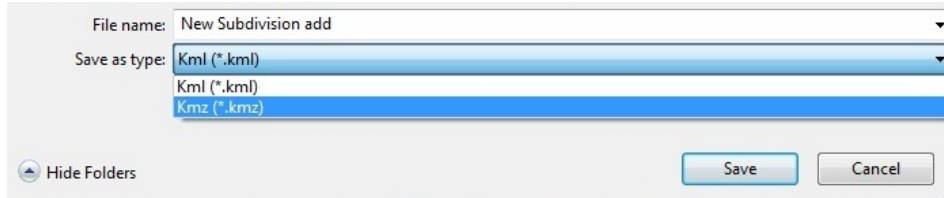
3. Your polygon will show up under the Places panel.



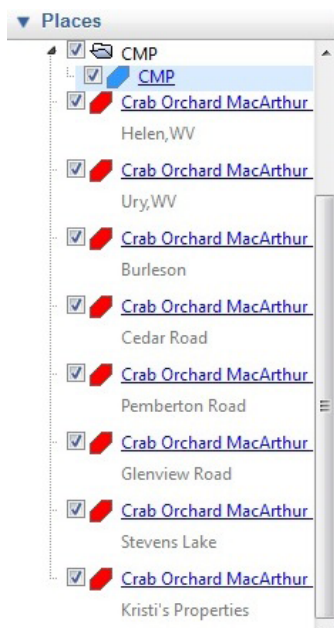
Save your polygon as a .kml or .kmz file

1. Right-click on your polygon file (it will be under the Places panel) and select the **Save Place As...** option.
2. In the dialog box that opens, select the folder to where you want to save the file on your computer. From the **Save as type** dropdown, select either .Kml or .Kmlz

Note: Do not use the email button from the Google Earth toolbar to send us the file



****If you've created multiple files, you will have to right-click and Save Places As... for each individual file that you want included in your update.**** For example: In the following screen shot, 8 different files were created therefore a .kml or .kmz file will have to be created for each of those files.




3. You can now email the .kml or .kmz files to ops@skynetwest.com along with the Contact Submission Form.

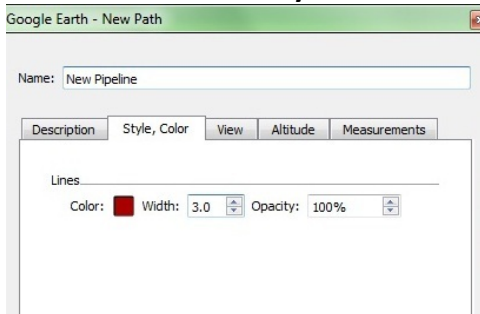
Merging Multiple KML/KMZ Files to Create One File

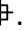
****If you have several kmz or kml files created through Google Earth, you can merge them using these steps:**

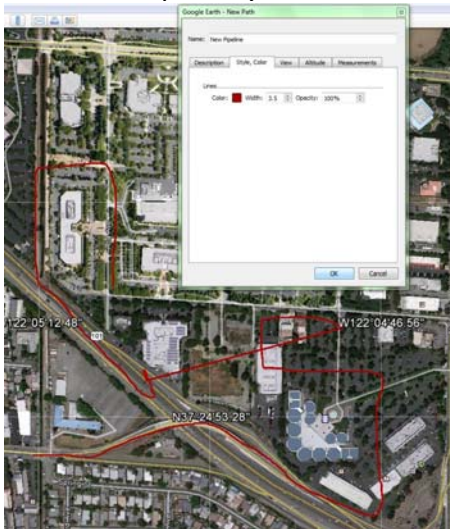
1. Go to File, then Open and select all the kmz or kml files you wish to merge. They will show up in your "Temporary Places" folder.
2. For better organization, Create a new folder and drag all the files you wish you merge into that folder. You can rename that folder. If you create multiple folders, make sure all your folders are within one main folder.
3. To save your big file, right click on your main folder and select "Save Place As..".
4. Pick a name for your file and you're done!
5. You can now email that 1 .kml or .kmz file to ops@skynetwest.com along with the Contact Submission Form.

To Add Path

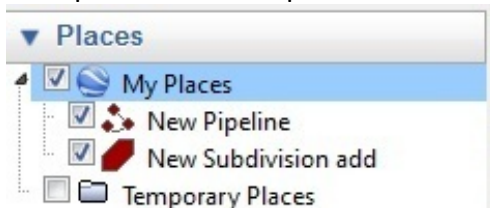
1. Click the Add Path button . Give your path a name. You can change the Color and Width of the line.
***DO NOT CLICK "OK" yet**



2. Once you've given your path a name, you can now start drawing the path. *Notice your drawing tool will look like a square symbol* . After you finish drawing the path or line, then click OK in the dialog box.



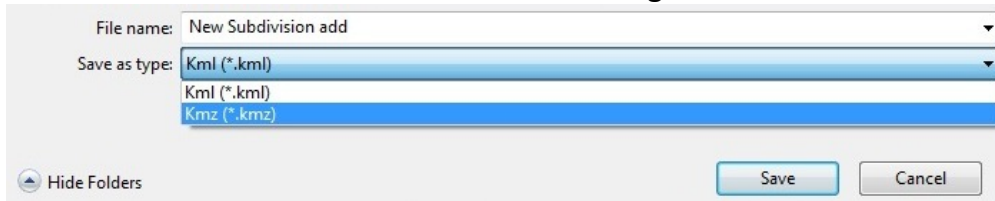
3. Your path will show up under the Places panel.



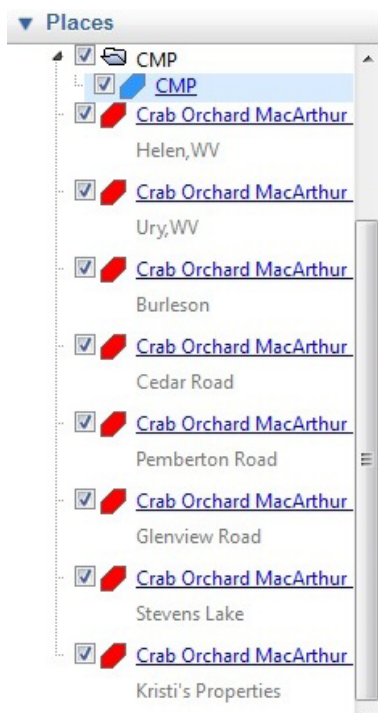
Save your path as a .kml or .kmz file

1. Right-click on your path file (it will be under the Places panel) and select the **Save Place As...** option.
2. In the dialog box that opens, select the folder to where you want to save the file on your computer. From the **Save as type** dropdown, select either .Kml or .Kmlz Give your file a name and then click **Save**.

Note: Do not use the email button from the Google Earth toolbar to send us the file



****If you've created multiple files, you will have to right-click and Save Places As... for each individual file that you want included in your update.**** For example: In the following screen shot, 8 different files were created therefore a .kml or .kmz file will have to be created for each of those files.



3. You can now email the .kml or .kmz file to ops@skynetwest.com along with the Contact Submission Form.

Merging Multiple KML/KMZ Files to Create One File

****If you have created several kmz or kml files through Google Earth, you can merge them using these steps:**

1. Go to File, then Open and select all the kmz or kml files you wish to merge. They will show up in your "Temporary Places" folder.
2. For better organization, Create a new folder and drag all the files you wish you merge into that folder. You can rename that folder. If you create multiple folders, make sure all your folders are within one main folder.
3. To save your big file, right click on your main folder and select "Save Place As..".
4. Pick a name for your file and you're done!
5. You can now email that 1 .kml or .kmz file to op@skynetwest.com along with the Contact Submission Form.

****If additional help is needed, Google Earth provides additional resources located in the Help section and there are several tutorials available on YouTube.****